

YTL series circular electrical connector



Part number

| | YTL | 38 | P | 1 | -07 | S | B | W | B ₁ |
|--|-----|----|---|---|-----|---|---|---|----------------|
| Basic series | | | | | | | | | |
| Shell size | | | | | | | | | |
| 32, 38, 52 | | | | | | | | | |
| Type of connector | | | | | | | | | |
| P = Plug | | | | | | | | | |
| R = Receptacle | | | | | | | | | |
| Type of plug | | | | | | | | | |
| 0 = Plug without locking device | | | | | | | | | |
| 1 = Plug with locking device | | | | | | | | | |
| Contact number | | | | | | | | | |
| See below | | | | | | | | | |
| Type of contact | | | | | | | | | |
| P = Pin | | | | | | | | | |
| S = Socket | | | | | | | | | |
| Type of contact | | | | | | | | | |
| B ~ U (if you need detailed datasheet about the contact, please contact us.) | | | | | | | | | |
| Type of back shell | | | | | | | | | |
| N, W, T | | | | | | | | | |
| Finish | | | | | | | | | |
| B ₁ = Cadmium plating | | | | | | | | | |
| P ₁ = Electroless nickel plating with blast sand | | | | | | | | | |

Electrical performance

Contact resistance: $\leq 1.5 \text{ m}\Omega$, Rated current: 15 A

Rated operating voltage: 500V, AC/DC

Withstanding voltage: 3250V, AC

Insulation resistance: $\geq 5000 \text{ M}\Omega$ (Normal); $\geq 500 \text{ M}\Omega$ (Damp heat); $\geq 200 \text{ M}\Omega$ (High temperature)

Mechanical performance

Endurance: 750 cycles

Insertion and withdrawal force of contact: 1.5N ~ 3.0N

Cross section of conductor: $0.5 \text{ mm}^2 \sim 1.5 \text{ mm}^2$

Environmental performance

Operating temperature: $-40 \text{ }^\circ\text{C} \sim +100 \text{ }^\circ\text{C}$

Humidity: 92% ~ 95% (40 $^\circ\text{C}$)

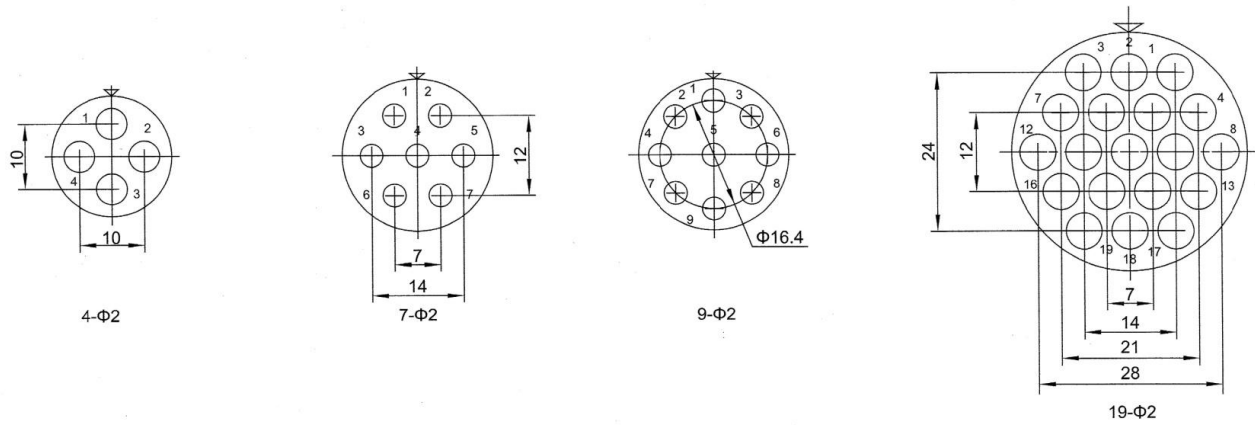
Vibration: 1 ~ 10 Hz, amplitude 7.5 mm; 10 ~ 55 Hz, amplitude 0.6 mm; 55 ~ 500 Hz, 60 m/s^2

Material

Shell: Aluminum-alloy, Contact: Copper-alloy

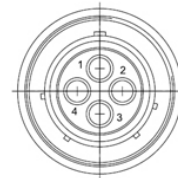
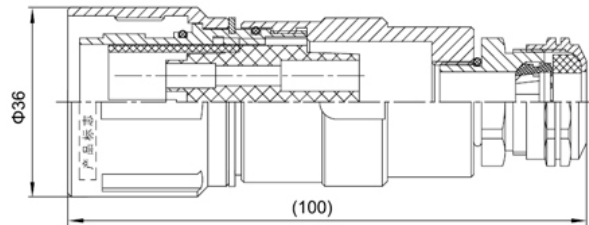
Finish of contact: Silver or gold plating

Contact layout

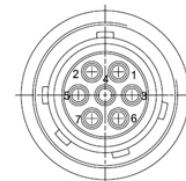
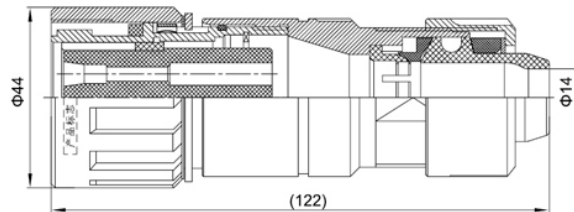


Shell size

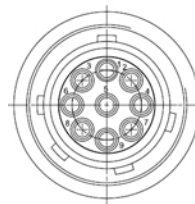
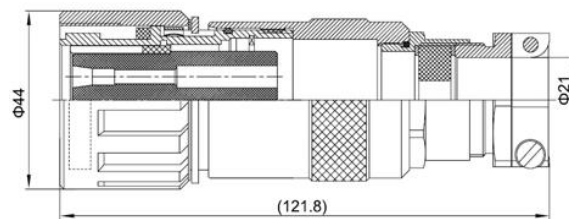
Plug (YTL32P-04PSB₁)



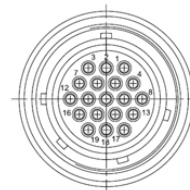
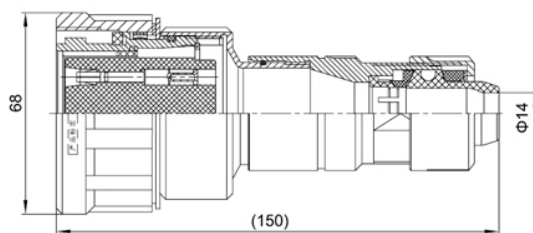
Plug (YTL38P1-07SBWB₁)



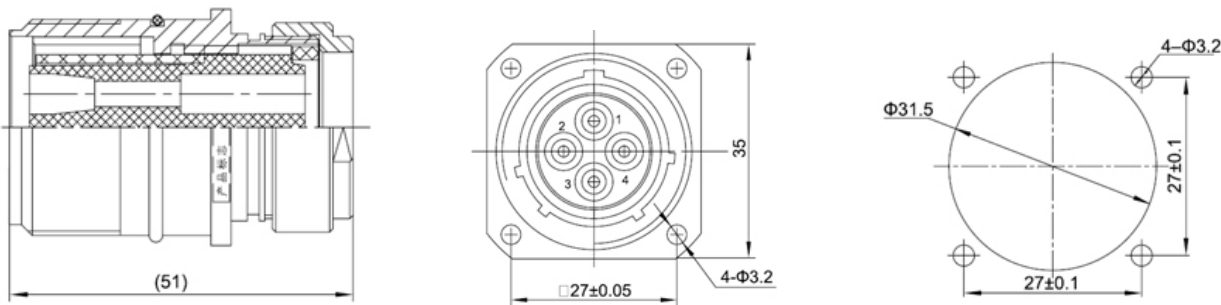
Plug (YTL38P1-09SHTB₁)



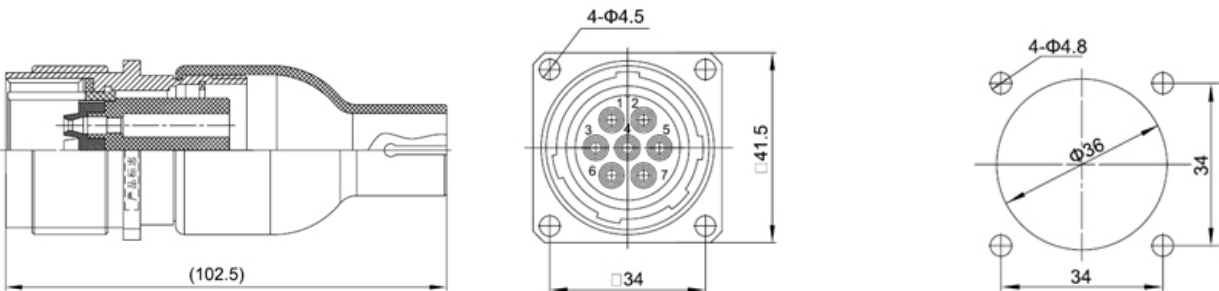
Plug (YTL52P1-19SBWB₁)



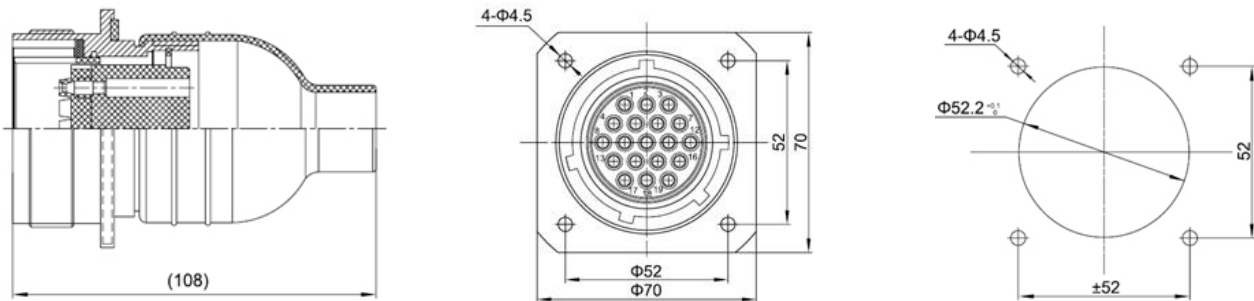
Receptacle (YTL32R-04SB₁)



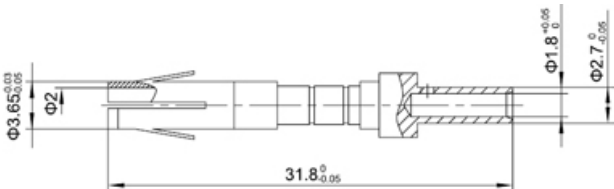
Receptacle (YTL38R-07PBNB₁)



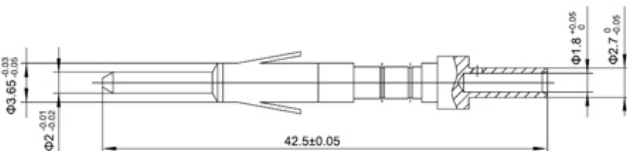
Receptacle (YTL52R-19PBNB₁)



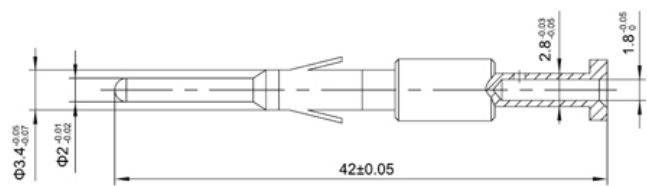
Socket (YTL32-2S)



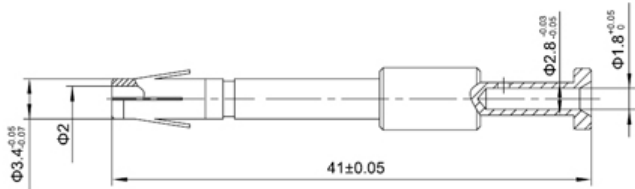
Pin (YTL32-2P)



Pin (YTL38-2PB)



Socket (YTL38-2SB)



Socket (YTL38-2SH)

