

J36B series rectangle electrical connector



Conform to Chinese military connector standard GJB142A-94. J36B series is extended from J36 series, the type of termination is solder.

Part number

	J36B	-17	T
Basic series			
Number of contact			
9, 17, 26, 38, 52, 62, 74			
Type of connector			
Z = Receptacle with socket			
T = Plug with pin			

Performance specification

Temperature: -55 °C ~ +125 °C

Relative humidity: at 40 °C \pm 2 °C, 90% ~ 95%

Atmospheric pressure: 101.3 KPa ~ 1.33 Pa

Vibration: at 10Hz ~ 2000Hz, acceleration 245 m/s²

Shock: 980 m/s²

Acceleration: 780 m/s²

Electrical performance

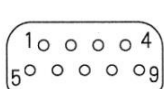
Rated current: 5A

Insulation resistance: \geq 5000 M Ω

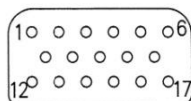
Withstanding voltage: 800 V

Endurance: 500 cycles

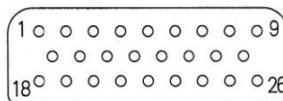
Contact layout



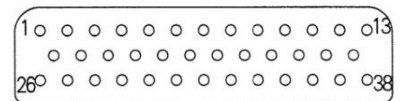
9



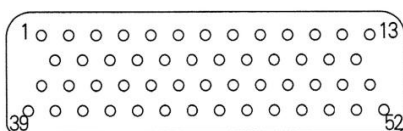
17



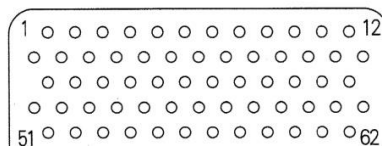
26



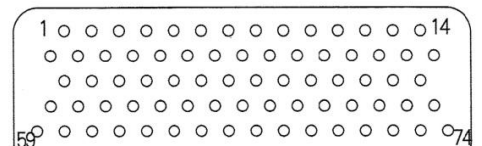
38



52

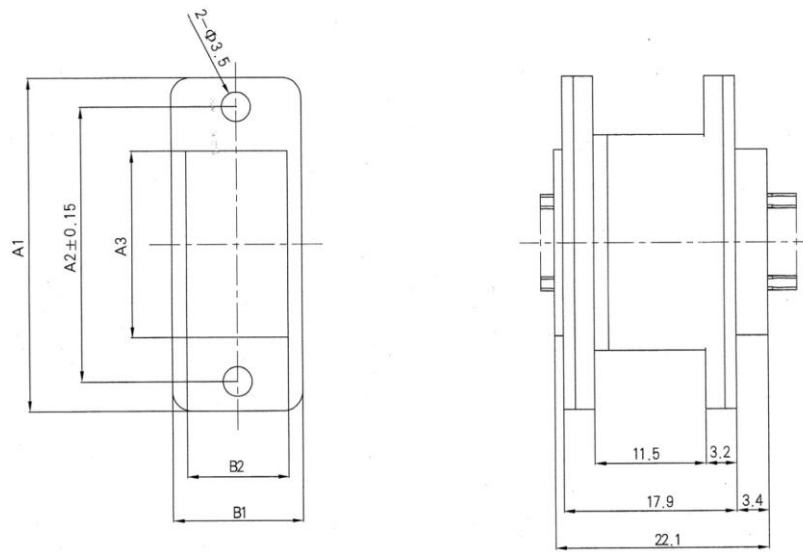


62



74

Shell size



Part number	A1	A2	A3	B1	B2
J36B - 9T/Z	34	28	19	13.5	10.5
J36B - 17T/Z	39	32	22	16.0	13.0
J36B - 26T/Z	49	42	32	16.0	13.0
J36B - 38T/Z	59	52	42	16.0	13.0
J36B - 52T/Z	61	54	44	18.5	15.5
J36B - 62T/Z	59	52	42	21.0	18.0
J36B - 74T/Z	67	60	50	21.0	18.0